

Horn Creek Hemp

Sample Rock Candy

Strain

<LOQ	10.04%	11.93%
$\Delta 9$ THC	Total CBD	Total Cannabinoids
Not tested	Pass	119.3
Water Activity	10.54	mg / g Total Cannabinoids
	Moisture	



Sample ID **22110960518**

Matrix Flower

Metric

Harvest/Prod Date

Report Created 11/22/2022

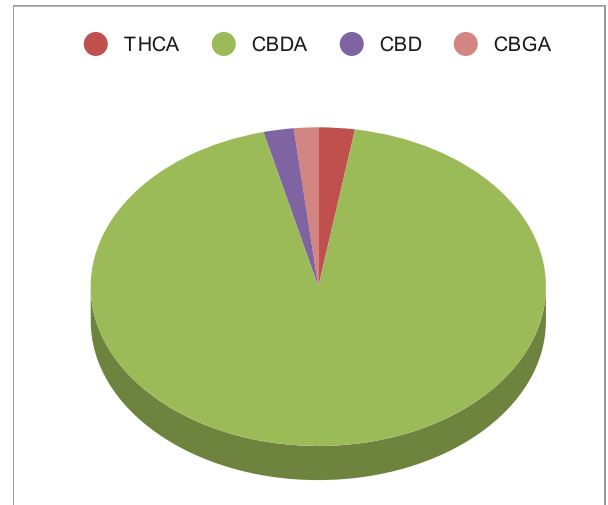
Results Valid Until 11/22/2023

Sample Extracted
11/17/2022 17:15

Sample Analyzed
11/18/2022 12:40


Method SOP LO001-R10

Cannabinoids	%Weight	mg/ gram	LOQ(% /w)
$\Delta 9$ THC	<LOQ	<LOQ)	0.06
THCA	0.31	3.1	0.06
Total THC ($_{THCA} \times 0.877$) + $\Delta 9$ THC	0.27	2.7	0.11
CBDA	11.16	111.6	0.06
CBD	0.26	2.6	0.06
CBN	<LOQ	<LOQ)	0.06
$\Delta 8$ THC	<LOQ	<LOQ)	0.06
‡ CBC	<LOQ	<LOQ)	0.06
‡ CBGA	0.21	2.1	0.06
‡ CBG	<LOQ	<LOQ)	0.06
‡ CBDV	<LOQ	<LOQ)	0.06
‡ CBDVA	<LOQ	<LOQ)	0.06
‡ THCVA	<LOQ	<LOQ)	0.06
‡ CBDQ	<LOQ	<LOQ)	0.06

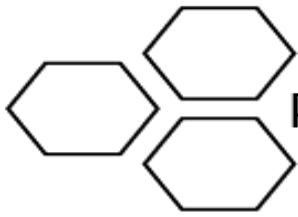


Total THC and Total CBD are calculated values per OAR 333-064-0100. Cannabinoid values for plant matter samples are reported on a dry weight basis. Water activity action level is 0.65Aw. LOQ= Limit of Quantitation. NR=Not Reported.

[Rogue Research Lab LLC](#)
[218 E. Main Street, Rogue River, OR 97537](#)
 Tel. [541-582-1962](#)
[ORELAP 4107](#) [OLCC 101050708B](#)
[rogue-research-lab.com](#)


 Craig Berry - Lab Director
 11/22/22

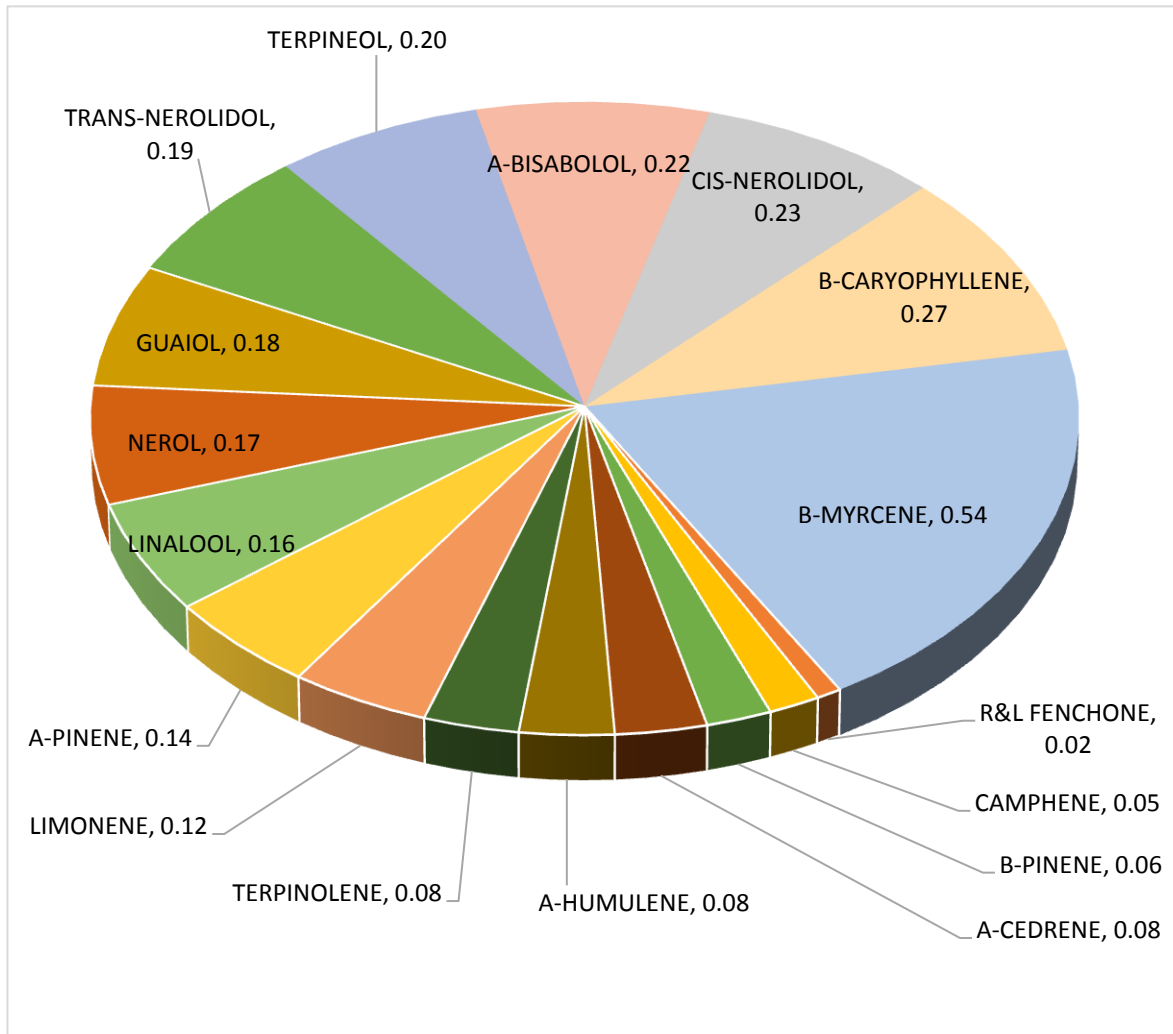
Results pertain to submitted samples only. Rogue Research Lab LLC makes no claims as to the consumer safety or other risks associated with any detected or non-detected amounts of any pesticides, solvents or other adulterants. This report shall not be reproduced, unless in its entirety, without written approval from Rogue Research Lab LLC. Samples were received in good condition and all QC samples met acceptance criteria of the method; data available upon request. Analytes accompanied by dagger (‡) are not within the scope of accreditation and are for informational purposes only.



Terpene Analysis

Customer Horn Creek Hemp
Sample Name Rock Candy
File Name 22110960518
Date/Time Extracted: 11/17/2022 18:15
Date/Time Analyzed: 11/18/2022 15:15
Analysis Method/SOP: LO 001R10/4-22RC1124

TESTED FOR : A-BISABOLOL, A-CEDRENE, A-HUMULENE, A-PHELLANDRENE, A-PINENE, A-TERPINENE, B-CARYOPHYLLENE, B-MYRCENE, BORNEOL, B-PINENE, CAMPHENE, CAMPHOR, CARYOPHYLLENE OXIDE, CEDROL, CIS-NEROLIDOL, D-CARENE, DL-MENTHOL, EUCALYPTOL, FARNESENE, R&L FENCHONE, FENCHYL ALCOHOL, GERANIOL, GERANYL ACETATE, G-TERPINENE, GUAIOL, ISOBORNEOL, ISOPULEGOL, LIMONENE, LINALOOL, NEROL, OCIMENE, P-CYMENE, PULEGONE, SABINENE, TERPINEOL, TERPINOLENE, TRANS-NEROLIDOL, TRANS-OCIMENE, VALENCENE.



Craig Berry
Craig Berry - Lab Director

11/19/2022

Terpene total w/w%

2.78