



These test results are for Research and Development purposes only

1 of 1

**Horn Creek Hemp**

Sample CBG Stem Cell

Strain

<b>0.13%</b>	<b>0.34%</b>	<b>16.11%</b>
Total THC	Total CBD	
<b>Not tested</b>	<b>Pass</b>	<b>Total Cannabinoids</b>
Water Activity	Moisture 5.72	



Sample ID **20102740646**

Matrix Flower

Metric

Harvest/Prod Date

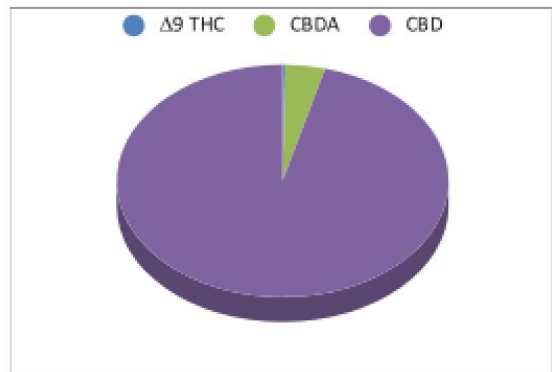
Report Created 11/2/2020

Results Valid Until 11/2/2021

Sample Extracted  
10/27/2020 8:15

Sample Analyzed  
10/27/2020 17:00

Cannabinoids	%Weight	LOQ(% w/w)
<b>Δ9 THC</b>	<b>0.00</b>	0.1
THCA	0.15	0.1
CBDA	0.19	0.1
CBD	0.17	0.1
CBN	0.00	0.1
‡ Δ8 THC	0.00	0.1
‡ CBC	0.00	0.1
‡ CBGA	15.60	0.1
‡ CBG	NR	0.1



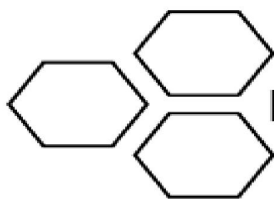
Total THC and Total CBD are calculated values per OAR 333-064-0100. Cannabinoid values for plant matter samples are reported on a dry weight basis. Water activity action level is 0.65Aw. LOQ= Limit of Quantitation. NR=Not Reported 0.00 = Not Detected above LOQ

[Rogue Research Lab LLC](#)  
[218 E. Main Street, Rogue River, OR 97537](#)  
 Tel. 541-582-1962  
[ORELAP 4107 OLCCL 1010507088](#)  
[rogue-research-lab.com](#)

  
 Craig Berry - Lab Director



Results pertain to submitted samples only. Rogue Research Lab LLC makes no claims as to the consumer safety or other risks associated with any detected or non-detected amounts of any pesticides, solvents or other adulterants. This report shall not be reproduced, unless in its entirety, without written approval from Rogue Research Lab LLC. Samples were received in good condition and all QC samples met acceptance criteria of the method; data available upon request. Analytes accompanied by dagger (‡) are not within the scope of accreditation and are for informational purposes only.

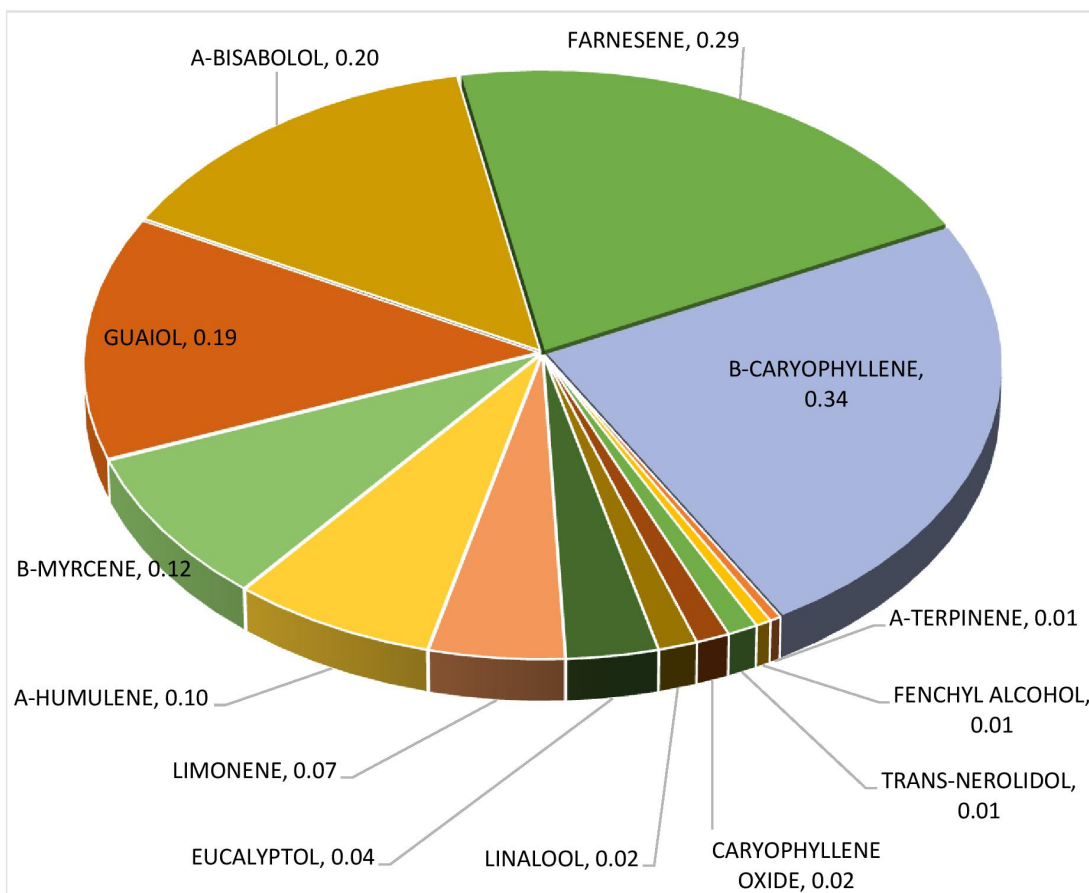


ROGUE RESEARCH LAB

## Terpene Analysis

**Customer** Horn Creek Hemp  
**Sample Name** CBG Stem Cell  
**File Name** 20102740646  
**Date/Time Extracted:** 10/27/2020 17:15  
**Date/Time Analyzed:** 10/27/2020 14:56  
**Analysis Method/SOP:** SOP LO-012R1/R191118

TESTED FOR : (-) BORNEOL,(+) BORNEOL, A-BISABOLOL, A-CEDRENE, A-HUMULENE, A-PHELLANDRENE, A-TERPINENE, A-TERPINEOL, B-CARYOPHYLLENE, B-MYRCENE, A-PINENE, B-PINENE, 3-CARENE, CAMPHENE, (1R) (+) (-) CAMPHOR, 1S) (-) (-) CAMPHOR, CAMPHOR, CARYOPHYLLENE OXIDE, CEDROL, CIS-NEROLIDOL, DL-MENTHOL, EUCALYPTOL, FARNESENE, (-) FENCHONE, (+) FENCHONE, FENCHYL ALCOHOL, GERANIOL, GERANYL ACETATE, TERPINENE, GUAJOL, ISOBORNEOL, ISOPULEGOL, LIMONENE, LINALOOL, NEROL, OCIMENE, PULELONE, SABINENE, SABINENE HYDRATE, TERPINOLENE, TRANS-NEROLIDOL, VALENCENE.



Craig Berry - Lab Director

11/3/2020

Terpene total w/w%

1.42